

Main Line Flax

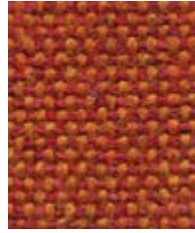
camira

Main Line Flax

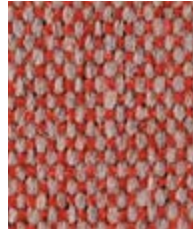
www.camirafabrics.com



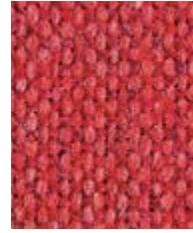
Lambeth
MLF08



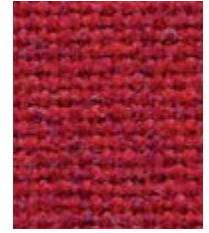
Leyton
MLF13



Barbican
MLF03



Aldgate
MLF01



Kilburn
MLF06



Parsons
MLF14



Wembley
MLF11



Paddington
MLF39



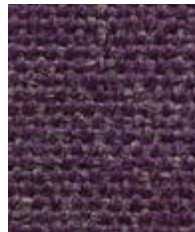
Northfields
MLF40



Hillingdon
MLF41



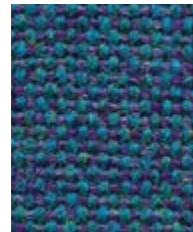
Euston
MLF04



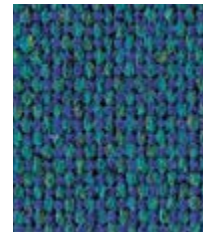
Highgate
MLF33



Charing
MLF27



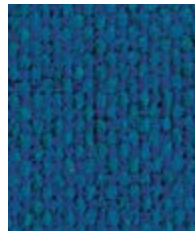
Russell
MLF38



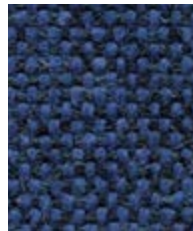
Pimlico
MLF34



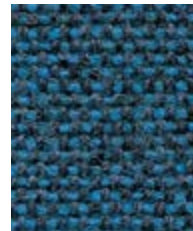
Waterloo
MLF21



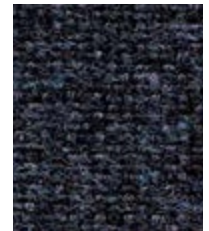
Holborn
MLF05



Victoria
MLF19



Brompton
MLF35



Tower
MLF36



Newbury
MLF10



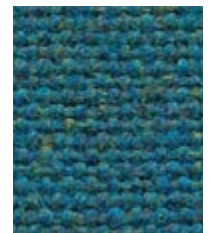
Bayswater
MLF24



Westminster
MLF22

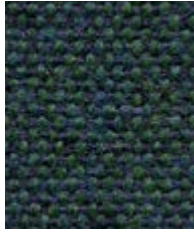


Bethnal
MLF25

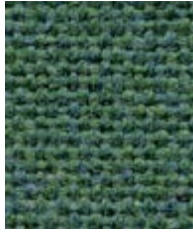


Stanmore
MLF37

Photographic fabric scans are not color accurate. Always request actual fabric samples before ordering.



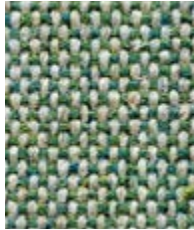
Greenford
MLF32



Farrington
MLF29



Tooting
MLF17



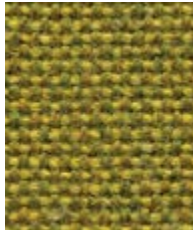
Monument
MLF09



Tufnell
MLF18



Finsbury
MLF30



Goldhawk
MLF31



Kensington
MLF07



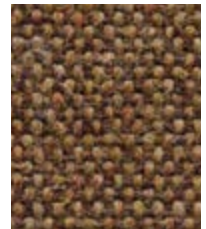
Upminster
MLF20



Morden
MLF12



Bank
MLF23



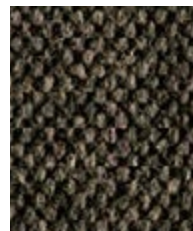
Stockwell
MLF15



Archway
MLF02



Camden
MLF26



Temple
MLF16



Edgware
MLF28



Task seating



Lounge seating



Panels



Environmental



Year guarantee

Main Line Flax builds on our industry leading bast fiber expertise to create a new inherently flame retardant fabric from sustainable sources. A symbol of purity, wild flax has been used in textiles for thousands of years thanks to its strong, long and smooth fibers found inside the stem of the plant. The fiber is spun into a 75-25 wool flax blend, then fiber dyed to create beautiful mixture yarns which are woven into interesting solids and cross-colors inspired by the rich tones of rare jewels.



Main Line Flax meets the ACT voluntary Performance Guidelines and is classified for Heavy Duty Upholstery.

Technical information

EN	F	ES
<p>Composition 75% Pure New Wool, 25% Flax</p>	<p>Composition 75% Pure Laine Vierge, 25% Lin</p>	<p>Composición 75% Pura Lana Virgen, 25% Lino</p>
<p>Environment Certified to the EU Ecolabel Certified to Indoor Advantage™ Gold Rapidly renewable and compostable Made from wool and bast fiber</p>	<p>Écologique Avec le certificat EU Ecolabel Certifié à Indoor Advantage™ Gold Rapidement renouvelable et compostable Fabriqué avec de la Laine et des fibres originaire de Tiges</p>	<p>Ambiental Certificado con EU Ecolabel Certificado de Indoor Advantage™ Gold Rapidamente renovable y compostable Producido con lana y fibras naturales</p>
<p>Width 54 inches minimum</p>	<p>Largeur 54 pouces minimum</p>	<p>Ancho 54 pulgadas mínimo</p>
<p>Weight 13 oz/sq yd ±5% (19^{1/4} oz/running yd ±5%)</p>	<p>Poids 13 oz/sq yd ±5% (19^{1/4} oz/yd.lin ±5%)</p>	<p>Peso 13 oz/sq yd ±5% (19^{1/4} oz/lin.y ±5%)</p>
<p>Abrasion Resistance* ASTM D4157 Wyzenbeek method, Heavy Duty Upholstery Independently certified to ≥100,000 double rubs Covered by a full and comprehensive 10 year guarantee (full details available)</p>	<p>Résistance à l'abrasion ASTM D4157 Wyzenbeek method, Heavy Duty Upholstery Certificat indépendant ≥100,000 double frottement Avec une garantie totale de durabilité de 10 ans (renseignements complémentaires disponibles)</p>	<p>Resistencia a la abrasión ASTM D4157 Wyzenbeek method, Heavy Duty Upholstery independientemente del certificado de ≥100,000 rozamiento doble Con garantía de uso 10 años (más información disponible bajo consulta)</p>
<p>Flammability California Technical Bulletin 117 - 2013 NFPA 260 + UFAC Class 1 BS 7176 Low Hazard ASTM E84 Class 1 or A (Adhered) ASTM E84 Class 2 or B (Un-adhered) IMO FTP Code (Part 8) <i>Note: Flammability performance is dependent on components used. Our certificates show what substrates have been used in our tests. For composite tests customers must ensure their complete furniture meets the necessary standards.</i></p>	<p>Flammabilité California Technical Bulletin 117 - 2013 NFPA 260 + UFAC Class 1 BS 7176 Low Hazard ASTM E84 Class 1 or A (Adhered) ASTM E84 Class 2 or B (Un-adhered) IMO FTP Code (Part 8) <i>Note: La performance de flammabilité dépend des composantes utilisées. Nos certificats indiquent les substrats utilisés dans nos tests. Pour les tests composites, les clients doivent s'assurer que leurs meubles complets satisfont aux normes nécessaires.</i></p>	<p>Inflamabilidad California Technical Bulletin 117 - 2013 NFPA 260 + UFAC Class 1 BS 7176 Low Hazard ASTM E84 Class 1 or A (Adhered) ASTM E84 Class 2 or B (Un-adhered) IMO FTP Code (Part 8) <i>Nota: El rendimiento de la inflamabilidad depende de los componentes usados. Nuestros certificados muestran qué substratos se han usado en nuestros tests. Para tests compuestos nuestros clientes deben asegurar si sus muebles cumplen la normativa al uso.</i></p>
<p>Color Fastness to Light AATCC-16 (40 hours) Class 4</p>	<p>Solidité à la Lumière AATCC-16 (40 heures) Class 4</p>	<p>Solidez a la Luz AATCC-16 (40 horas) Class 4</p>
<p>Color Fastness to Crocking AATCC-8 (Dry: 4, Wet: 3)</p>	<p>Solidité à la Crocking AATCC-8 (Sec: 4, Mouillé: 3)</p>	<p>Solidez al Rozamiento AATCC-8 (Húmedo: 4, Seco: 3)</p>
<p>Cleaning W/S Clean with a water-based cleaning agent or solvent: Depending on the stain, you can use a dry-cleaning solvent, the foam of a mild detergent, or upholstery shampoo.</p>	<p>Nettoyage W/S Nettoyer avec un produit d'entretien à base d'eau: en fonction de la tâche, vous pouvez nettoyer à sec, à l'aide d'un détergent ou bien avec du shampoing pour meubles.</p>	<p>Limpieza W/S Lavar con un producto de limpieza neutro o solvente: en función de la suciedad o mancha, se puede limpiar con un producto de limpieza en seco, espuma templada o producto de limpieza de sofás.</p>
<p>*Abrasion test results exceeding ACT Performance Guidelines are not an indicator of product lifespan. Multiple factors affect fabric durability and appearance retention. We're confident in the durability of our products so we provide a robust 10 year guarantee (full details available). This product is externally certified, details of which are on our website and available from our customer services team. Batch to batch variations in shade may occur within commercial tolerances. We reserve the right to alter technical specifications without notice. The Unregistered Design Rights and the Copyright in all designs are the exclusive property of Camira Fabrics Limited.</p>	<p>*Les résultats des tests d'abrasion dépassant les directives de performance ACT ne sont pas un indicateur de la durée de vie du produit. De multiples facteurs affectent la durabilité du tissu et la conservation de son apparence. Nous sommes confiants dans la durabilité de nos produits, nous offrons donc une solide garantie de 10 ans (tous les détails sont disponibles). Ce produit est certifié en externe, dont les détails sont sur notre site Web et disponible auprès de notre équipe de service à la clientèle. Des variations de teinte d'un lot à l'autre peuvent se produire dans les tolérances commerciales. Nous nous réservons le droit de modifier les spécifications techniques sans préavis. Les droits de conception non enregistrés et le droit d'auteur sur toutes les conceptions sont la propriété exclusive de Camira Fabrics Limited.</p>	<p>*Los resultados de las pruebas de abrasión que exceden las pautas de rendimiento ACT no son un indicador de la vida útil del producto. Múltiples factores afectan la durabilidad y aspecto del tejido. Confiamos en la durabilidad de nuestros productos, por lo que ofrecemos una sólida garantía de 10 años (detalles completos disponibles). Este producto se certifica externamente, todos los detalles están disponibles en nuestra web y el departamento de atención al cliente se los puede facilitar. Pequeñas variaciones de color entre diferentes tintadas son posibles dentro de las tolerancias comerciales. Nos reservamos el derecho a modificar las especificaciones técnicas sin previo aviso. Los derechos de diseño no registrados y el copyright de todos nuestros diseños son propiedad exclusiva de Camira Fabrics Limited.</p>